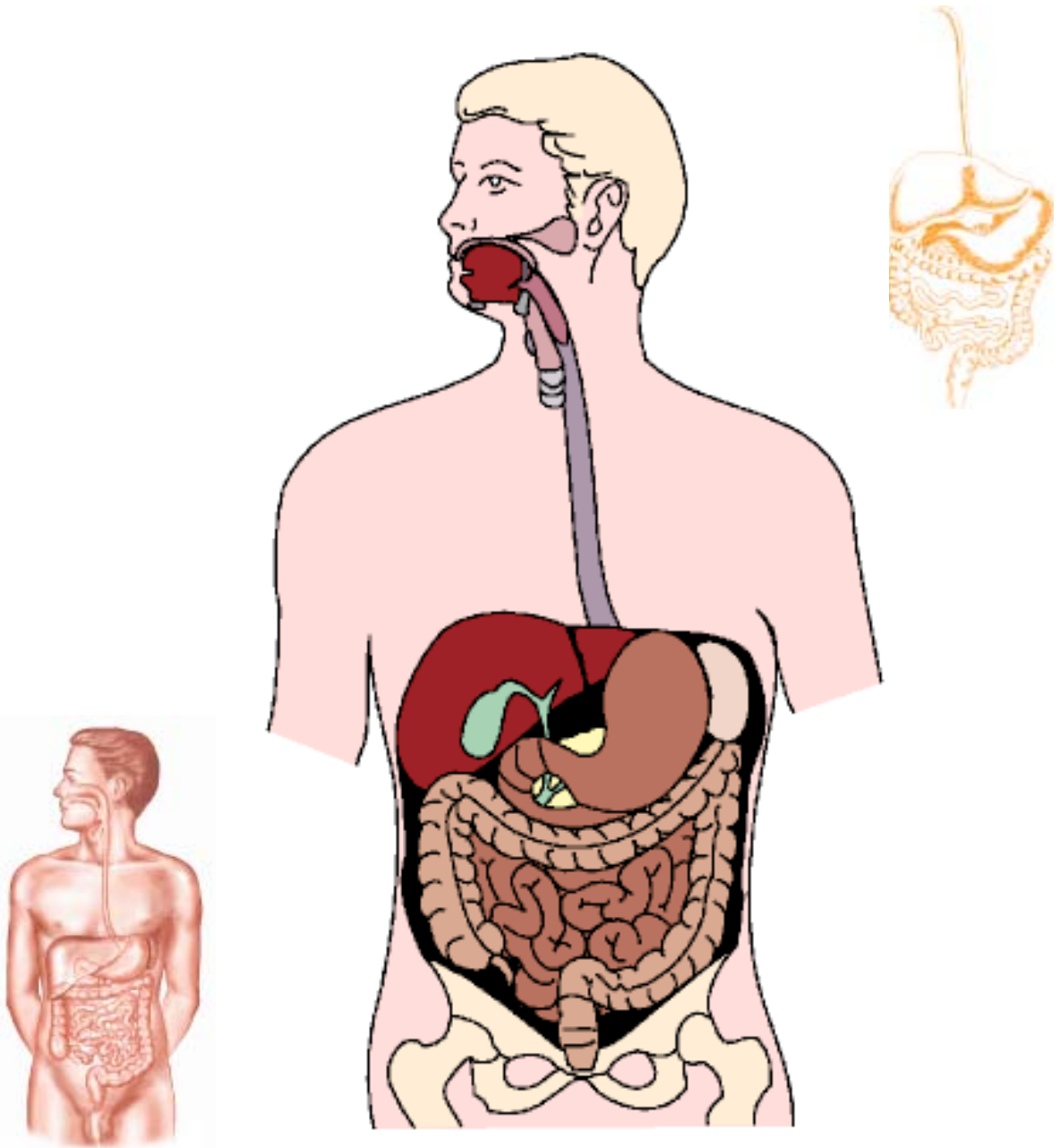


I ntestines



© 2004 Food Fitness First, Inc.
www.foodfitnessfirst.com



Intestines (Large)



What is it?

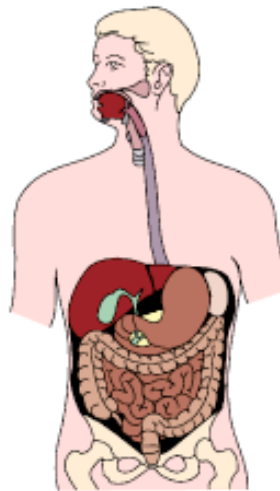
*Consists of right ascending colon, transverse colon, sigmoid colon (connected to the rectum), left descending colon
-appendix - small string shaped tube from the right ascending colon near small intestine

What does it affect?

- *Endocrine cells in intestinal tissues secrete hormones that help with digestion through absorption of water and electrolytes from the feces
- *Fluid when reach large intestine, solid at rectum as feces
- ***Bacteria**- in large intestine make Vitamin K, some cause diarrhea

Large Intestine consists of:

- ***Ascending Colon** - left side
- ***Transverse Colon** - top of the large intestine
- ***Sigmoid Colon** - at the end of the large intestine
- ***Descending Colon** - right side going to sigmoid colon, rectum and anus
- ***Rectum** - Feces located here
- ***Anus** - Feces eliminated, end of digestive tract





Intestines (Small)



What is it?

- *Small Intestine - stomach releases food into the duodenum, first part of the small intestine
- *Enters through pyloric sphincter, in amounts can digest
- *Full duodenum- signals stomach to empty
- *Duodenum- gets pancreatic enzymes from pancreas and bile from liver entering through the sphincter of Oddi, to aid digestion and absorption along with peristalsis, churns food mixed with intestinal secretions
- *Villi and microvilli on duodenal lining allow for greater nutrient absorption
- *Below are the jejunum, ileum absorb fats and nutrients enhanced by villi and microvilli, absorption of nutrients completed, final part of small intestine
- *Blood vessels in the intestinal wall carry the absorbed nutrients to the liver through the portal vein
- *Mucus- released by the intestinal wall to lubricate and dissolve the digested materials
- *In the duodenum water is quickly pumped to dilute stomach acidity
- *Traveling through the lower small intestine become more fluid like with added water, bile, mucus, pancreatic enzymes

What does it affect?

- *Endocrine cells- in intestinal tissues secrete hormones that help with digestion

